



ORCHID
HOMES

Smartly Designed Retirement Living

Designed for the
Years Ahead

RERA REG. NO. P520000025443

— Dodamarg-, Goa-MH Border —



LEGACY OF DELIVERING EXCELLENCE

Guided by a vision to create enduring value through innovation & excellence, GHD has demonstrated exceptional growth over the years, earning its reputation as one of India's largest and most trusted real estate developers. Our journey is marked by an unwavering commitment to quality, trust and customer satisfaction.

13+
UNIQUE
PROJECTS

700+
BRANDED
APARTMENTS

100+
LUXURY
VILLAS

200+
RESIDENTIAL
PLOTS



LIFE AT A GENTLER PACE

Orchid Homes is designed for those who seek peace, comfort, and security in the years ahead. As Retirement Holiday Homes, the project blends relaxed holiday living with the reassurance of a well-managed residential community.

Here, mornings begin calmly, days unfold at your own pace, and evenings invite rest, reflection, and meaningful connections—every day.





ORCHID
HOMES



HOMES DESIGNED FOR CALM LIVING

Orchid Homes offers fully furnished **Studio and 1 BHK apartments**, thoughtfully planned to support easy, independent living. With intuitive layouts, open views, and modern conveniences, each home is designed to minimise effort and maximise comfort—allowing residents to **enjoy retirement with dignity, ease, and peace of mind.**

Surrounded by greenery and hills, the environment feels more like a holiday retreat than a conventional residence.



PROJECT HIGHLIGHTS



Location
Kasainath Hill View, Girode,
Dodamarg (Goa - MH Border)



Configuration
Fully Furnished
Apartments

Studio Apartments
32 Units

1 BHK Apartments
72 Units

Total Units
104





Elevated Living Designed Around You

Orchid Homes is more than a residence—it's a sanctuary where modern living blends seamlessly with nature's calm, offering an experience enhanced by **unique concepts** and **thoughtful design** that takes care of everything you require.

Created for those who value tranquility, community, and comfort, it delivers a balanced, dignified, and future-ready lifestyle.

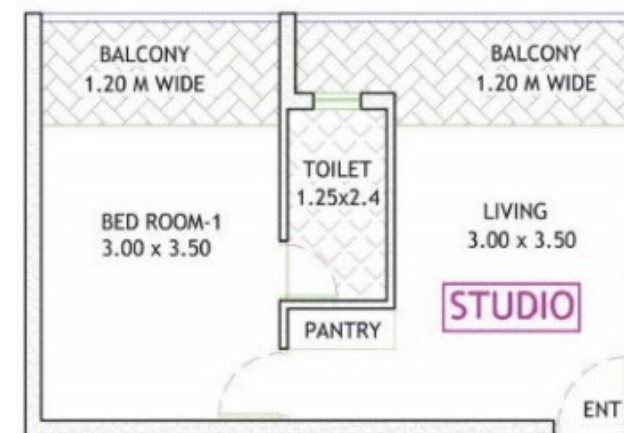




PROJECT MASTER PLAN



UNIT LAYOUTS



STUDIO
(Size: 462.85Sq.Ft. / 43Sq. Mtrs.)



1 BHK
(Size: 592 Sq.Ft. / 54.99 Sq. Mtrs.)

STUDIO APARTMENT
462.85 Sq. Ft.



1BHK APARTMENT
591 Sq. Ft.



IN-HOUSE AMENITIES



Grand Entrance, Lobby & Reception



Ample Natural Light & Ventilation



Dedicated Elevators



24/7 Security



Power Backup



Laundry Services



Housekeeping



Concierge Services



LIFESTYLE AMENITIES



Separate Residential Entrance



Butler Services



Travel & Transport Services



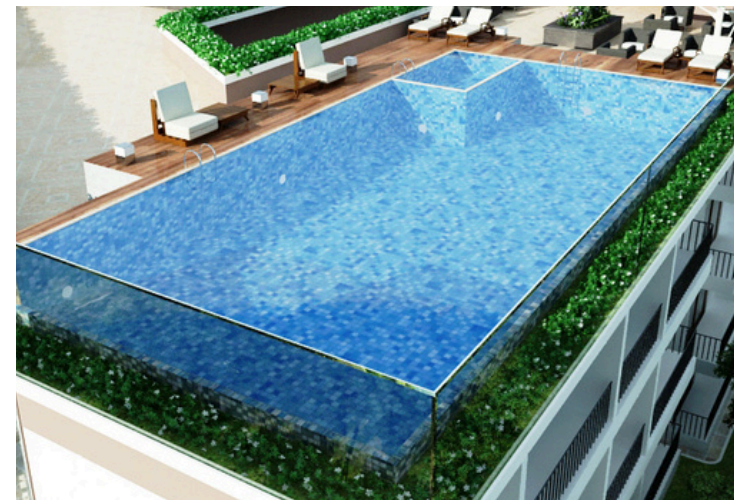
Shopping Assistance



Spa



Rooftop Swimming Pool



Rooftop Garden



Fitness Center



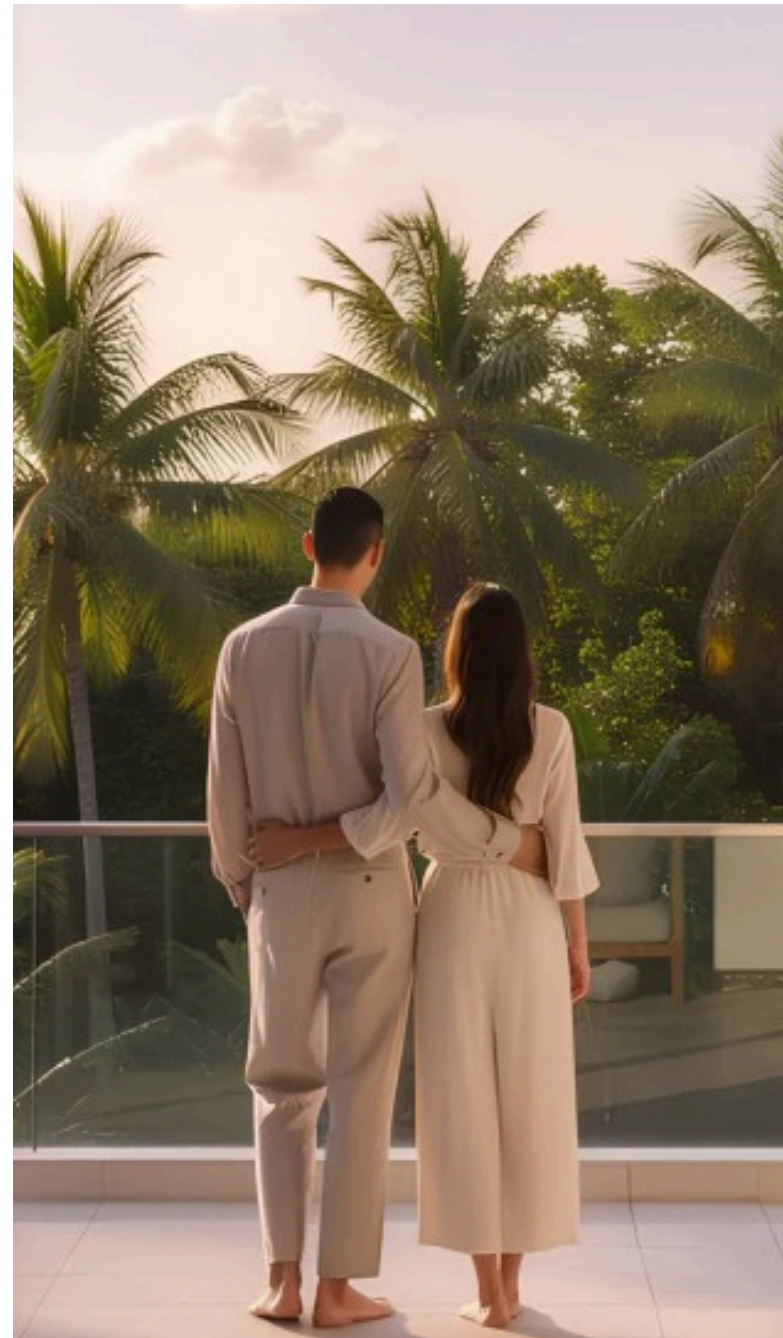




A LIFESTYLE IN HARMONY WITH NATURE

Here, modern living blends seamlessly with the calming essence of nature.

Every element, from location to layout has been designed to create a sanctuary where life feels lighter, slower, and more fulfilling.



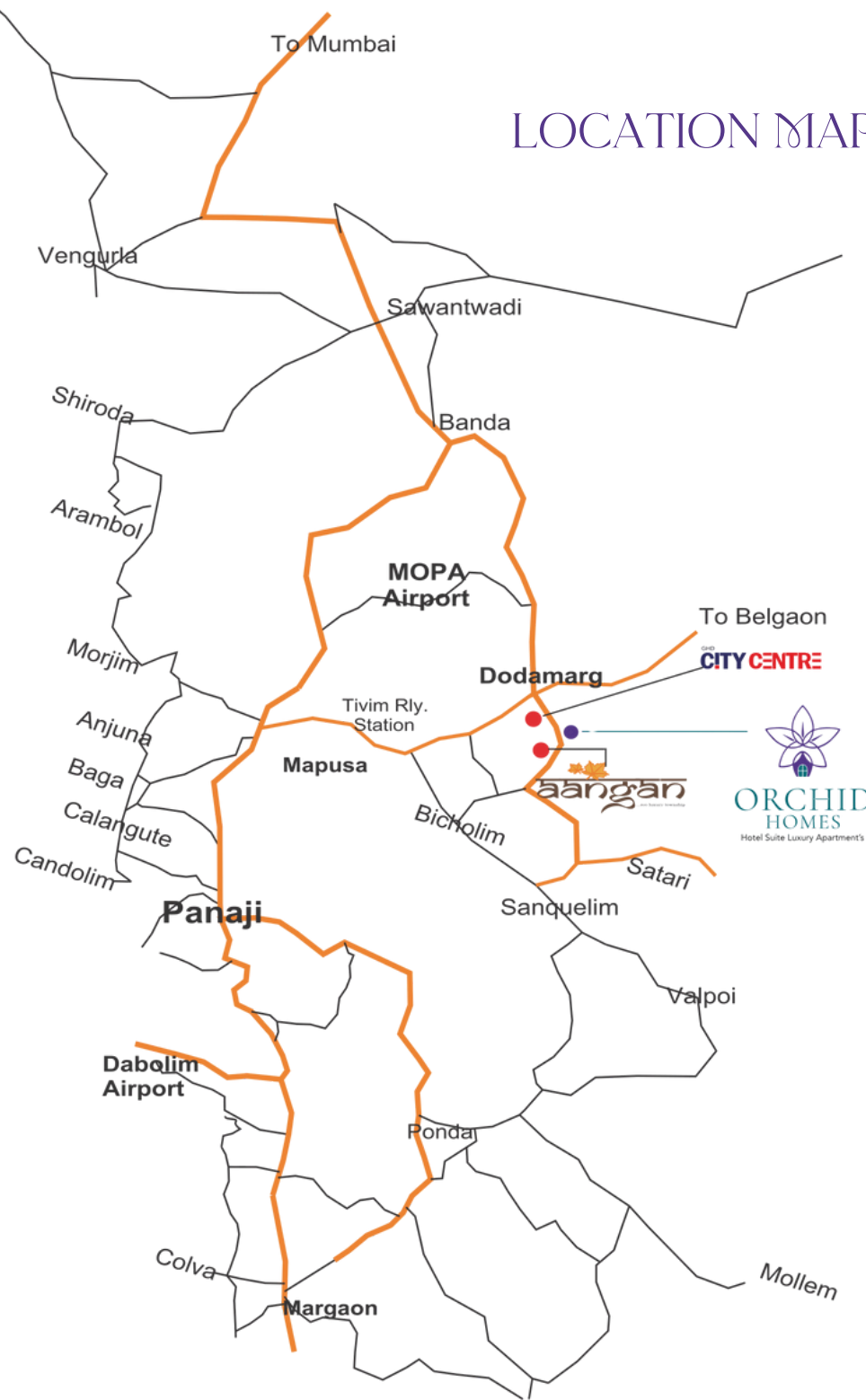
IDEAL FOR TODAY & TOMORROW

Whether you are planning a relaxed retirement, a second home, or a peaceful permanent residence, Orchid Homes adapts to your lifestyle, today and in the years ahead.





LOCATION MAP



CONNECTIVITY

MOPA Airport :

Mopa Airport is 20 Min drive for seamless travel.

Proximity to North Goa

Beaches:

Just a 40-minute drive will take you to the most famous beaches in North Goa (Anjuna, Baga, Calangute), known for their vibrant nightlife, water sports, and beautiful scenery.

Nearby Highways:

Well connected to NH-66 and the state highway 124 for easy commuting.

Tourist Spots:

A quick 10-minute drive to explore local attractions such as Tillari Dam, waterfalls, wildlife zones, plantations, and trekking spots

RERA REG. NO. P520000025443



Brought to you by GHD Group, one of Goa's most trusted, RERA-registered developers known for premium construction quality, thoughtful planning, and consistent delivery. With a proven track record of creating refined, future-ready addresses, GHD Group stands for reliability, craftsmanship, and a commitment to building homes that genuinely elevate everyday living.



DISCLAIMER

The information, specifications, and amenities mentioned in this advertisement are representational, informative, and illustrative in nature, and do not constitute any legal offering by GHD Group. The final project, upon completion, may vary from the artistic impressions and visuals shown here. GHD Group disclaims any responsibility for information accessed through external websites, links, or emails. Any reliance placed on such information is strictly at the user's own risk. The company reserves the right to modify, update, or amend project information, specifications, or details as per prevailing government norms without prior notice.